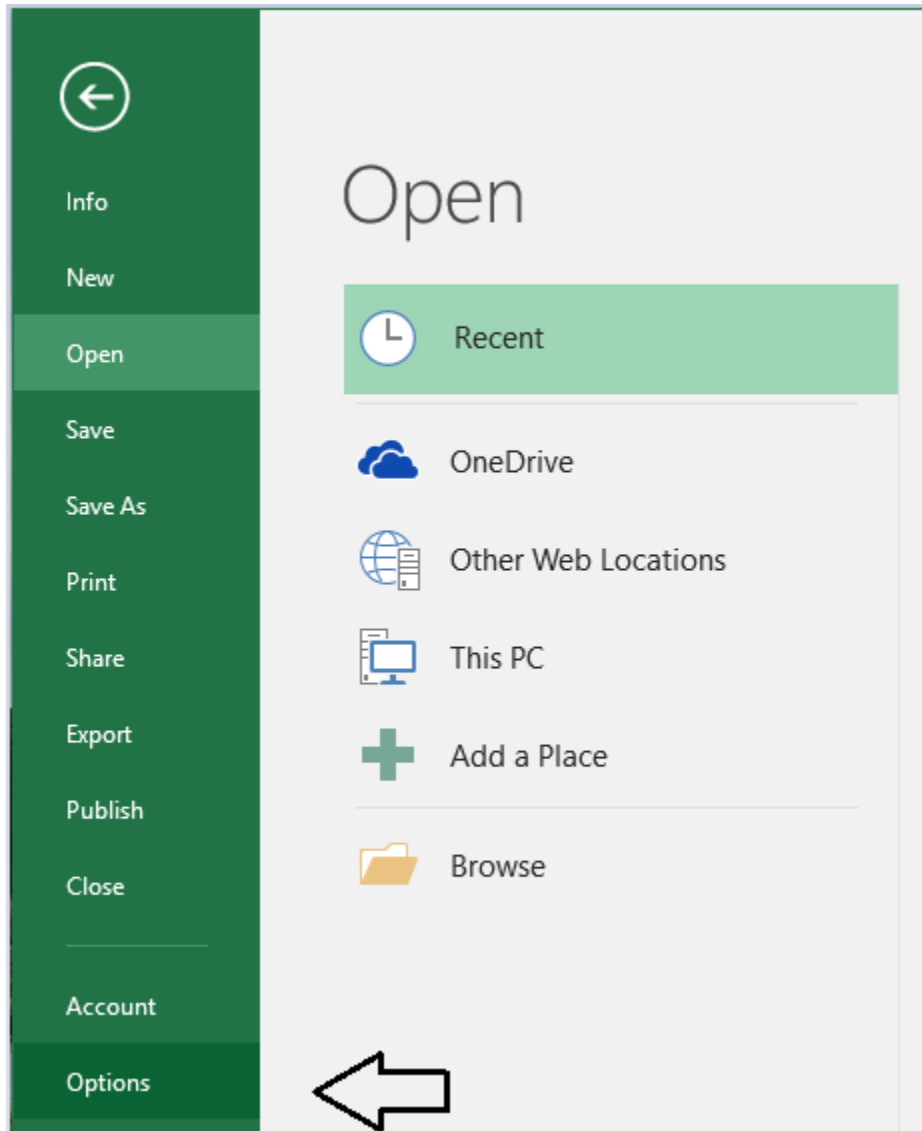


# nVision Drill Down For Excel 2016

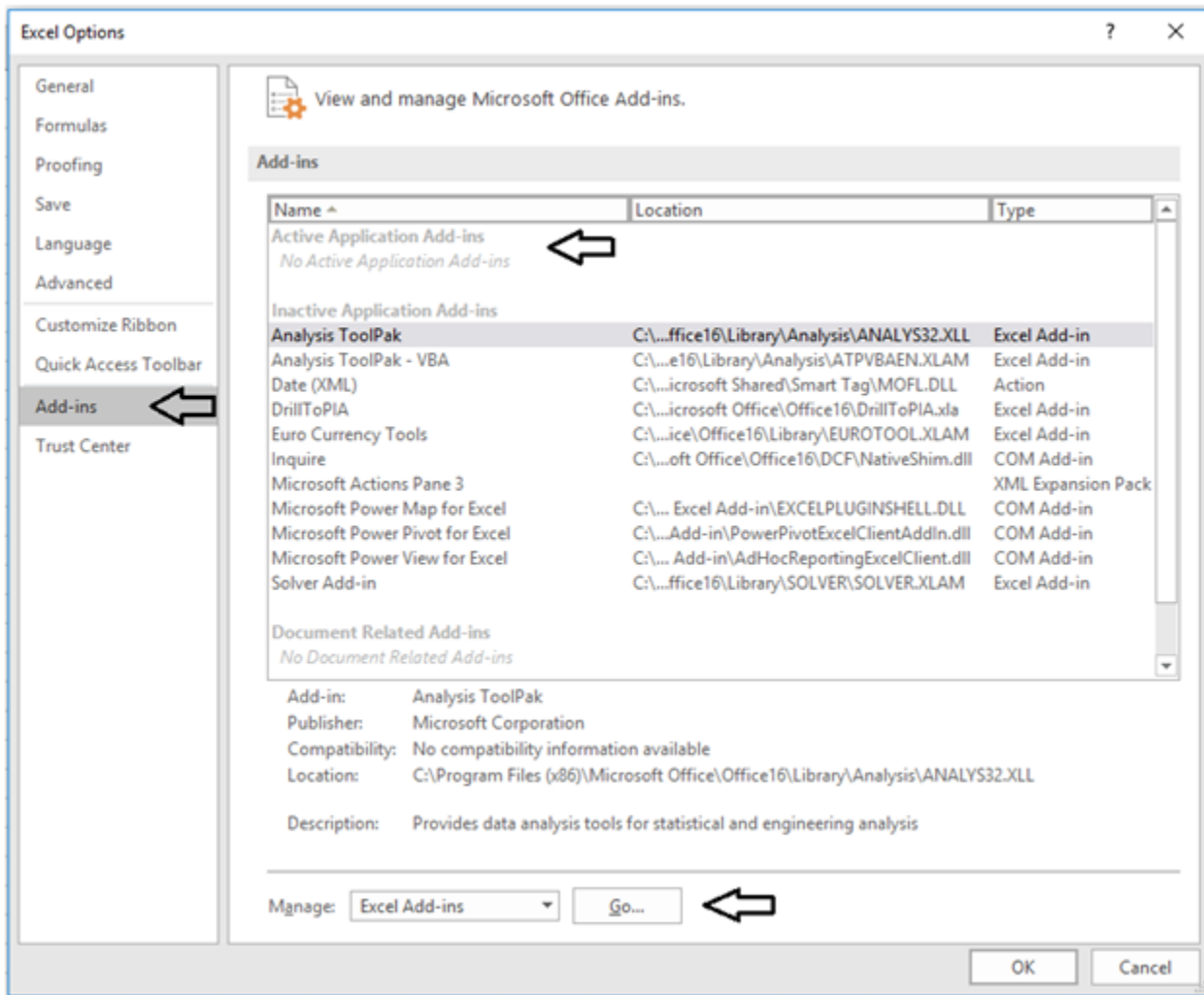
## Setting up the nVision drill toolbar For Excel 2016

- 1) Download the [DrillToPIA2016.zip](#) file
- 2) In Windows Explorer, copy DrillToPia.xla from the zip file and place it in the C:\Program Files\Microsoft Office\Office16 folder.
- 3) Open Excel 2016, click on the **File** menu then click on **Options** at the bottom.

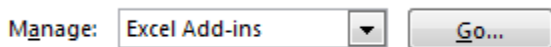


- 4) Select the Add-Ins entry from the left side menu.

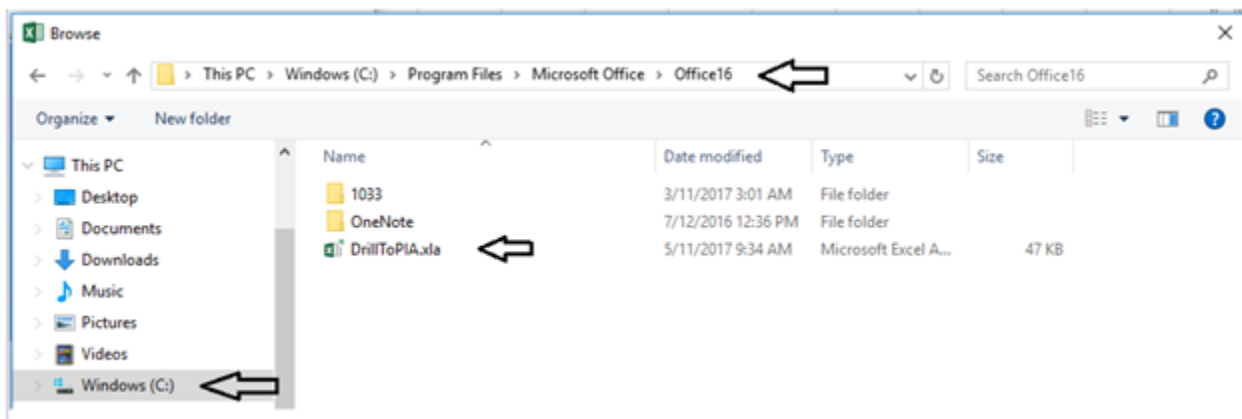
NOTE: there are like "No Active Application Add-Ins" show at the top



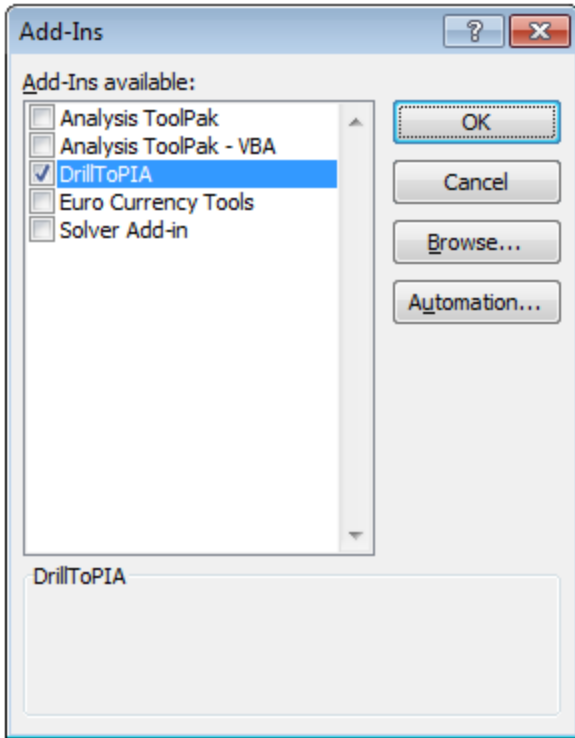
5) At the bottom of the Add-ins dialog box, there is an entry to Manage: "Excel Add-Ins". Hit the Go button.



6) You may have to click the Browse button and navigate to the 'C:\Program Files\Microsoft Office\Office16' directory. Select the DrilltoPia.xla file.



7) Make sure the Drilltopia.xla add-in is checked and select ok.



8) Click Ok to go back to Excel. If you want to confirm install, navigate back to the Add-Ins option (step 4), and you should see DrillToPIA in the list.

Add-ins		
Name ^	Location	Type
Active Application Add-ins		
DrillToPIA	C:\...icrosoft Office\Office16\DrillToPIA.xla	Excel Add-in

9) When you are in Excel you will now see an Add-ins toolbar. This new toolbar will have the nVisionDrill item.

